

breezeYachting.swiss



# Princess 35m 'RIVIERA LIVING'

from 130'000 EUR p/week | 35.2m | Cannes



*If you're looking for versatility, Princess 35m 'RIVIERA LIVING' has it in spades. Ideal as an island-hopper, somewhere to host family and friends, a day cruiser or home away from home, princess 35m adapts for every occasion.*

Her variety of spaces caters to all requirements, from the calm seating area forward which is perfect for quiet moments of relaxation to the spacious sun deck, the obvious spot for socialising and entertaining.

Inside, her Zuretti interior is chic and sophisticated, and the neutral tones combined with the natural light pouring in through her large windows lend the yacht a light, airy feel.

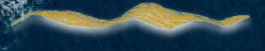
Calm and inviting, the sophisticated spaces are filled with natural light thanks to large windows throughout. Designed by Zuretti, the interior is characterised by neutral tones. The main salon has a large seating area and formal dining table, plus, unlike most yachts of this size, there is a fold-down balcony for uninterrupted views and a close connection to the water.

The sun deck on Princess 35m 'Riviera Living' is surprisingly spacious, and features a bar, large dining table and a Jacuzzi, while forward there is a huge relaxation area with plenty of seating and sunpads with parasols for shade. The large swim platform makes it easy to get in and out of the water when at anchor for when you need to cool off from the summer sun.



# KEY POINTS

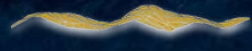
- 10 guests in 5 ensuite cabins
- Great outdoor deck space
- Jacuzzi on the sundeck
- Balcony on the main deck
- Top speed of 24 knots







breezeYachting.swiss















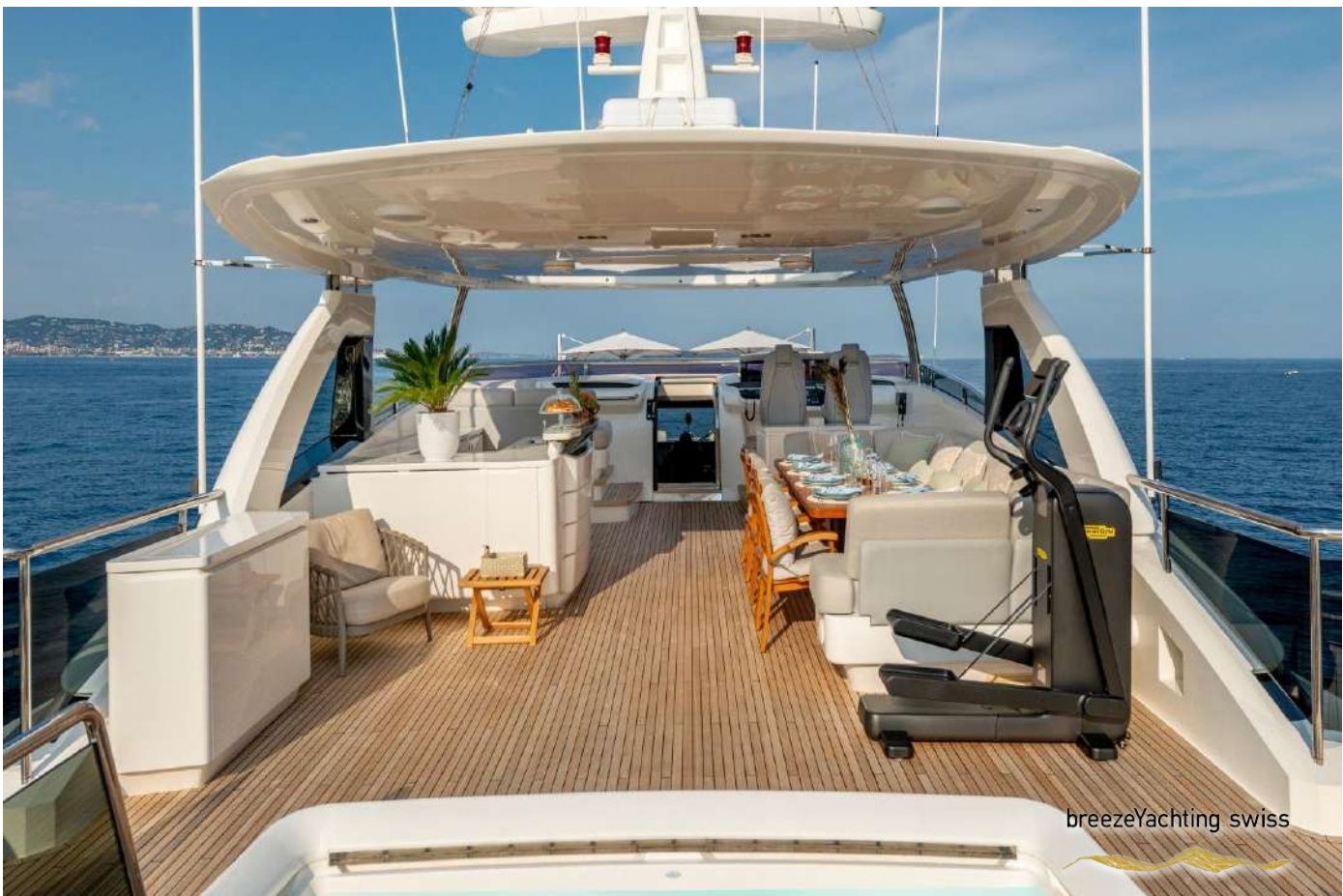




breezeYachting swiss















breezeYachting.swiss































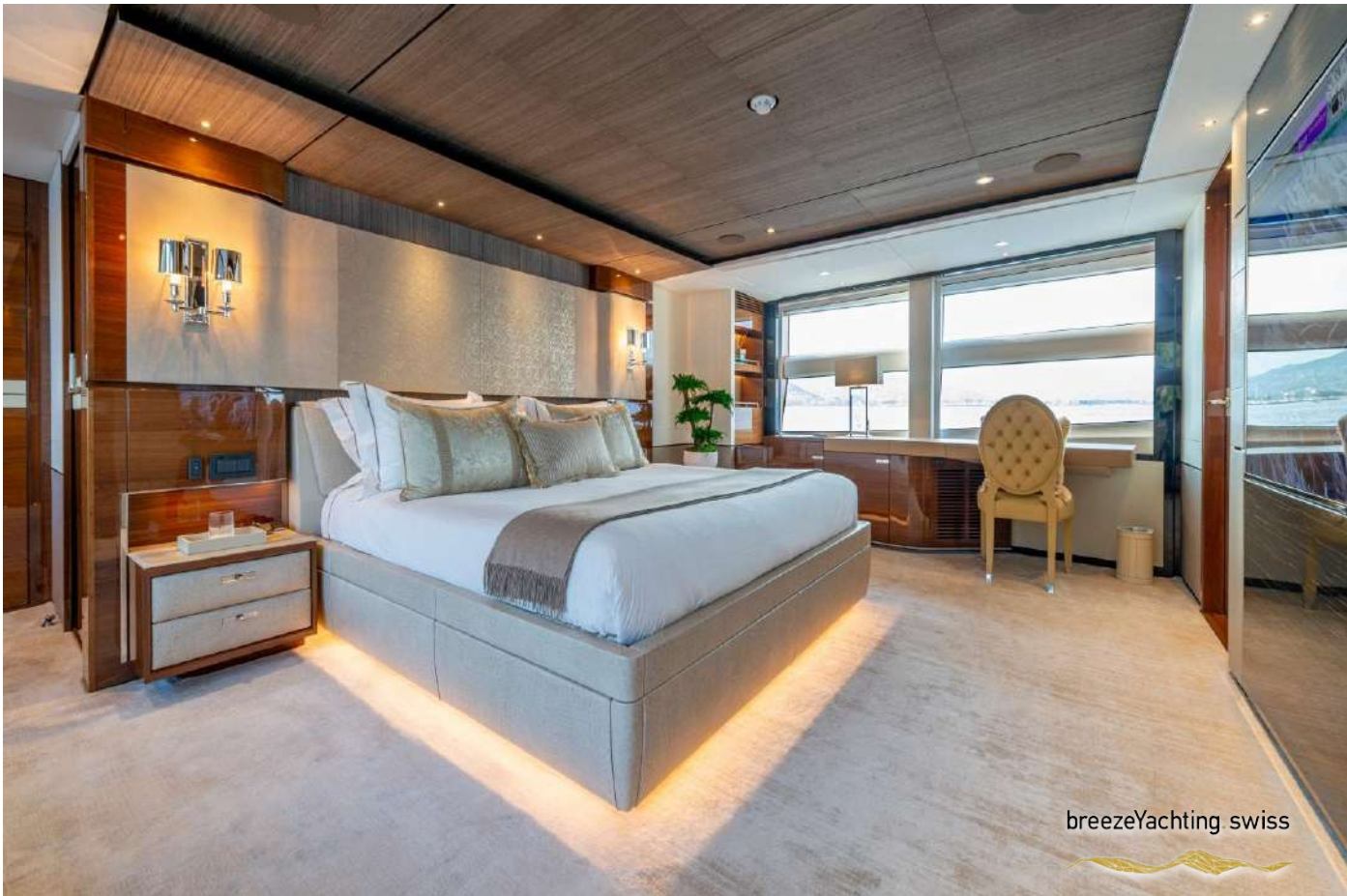


# Accommodation

'RIVIERA LIVING' accommodates 10 guests in five cabins.

A full beam master suite, situated on the main deck complete with ensuite featuring a bathtub and walk-in wardrobe, three doubles and one twin cabin.

The twin cabin can convert easily to become a double if needed.







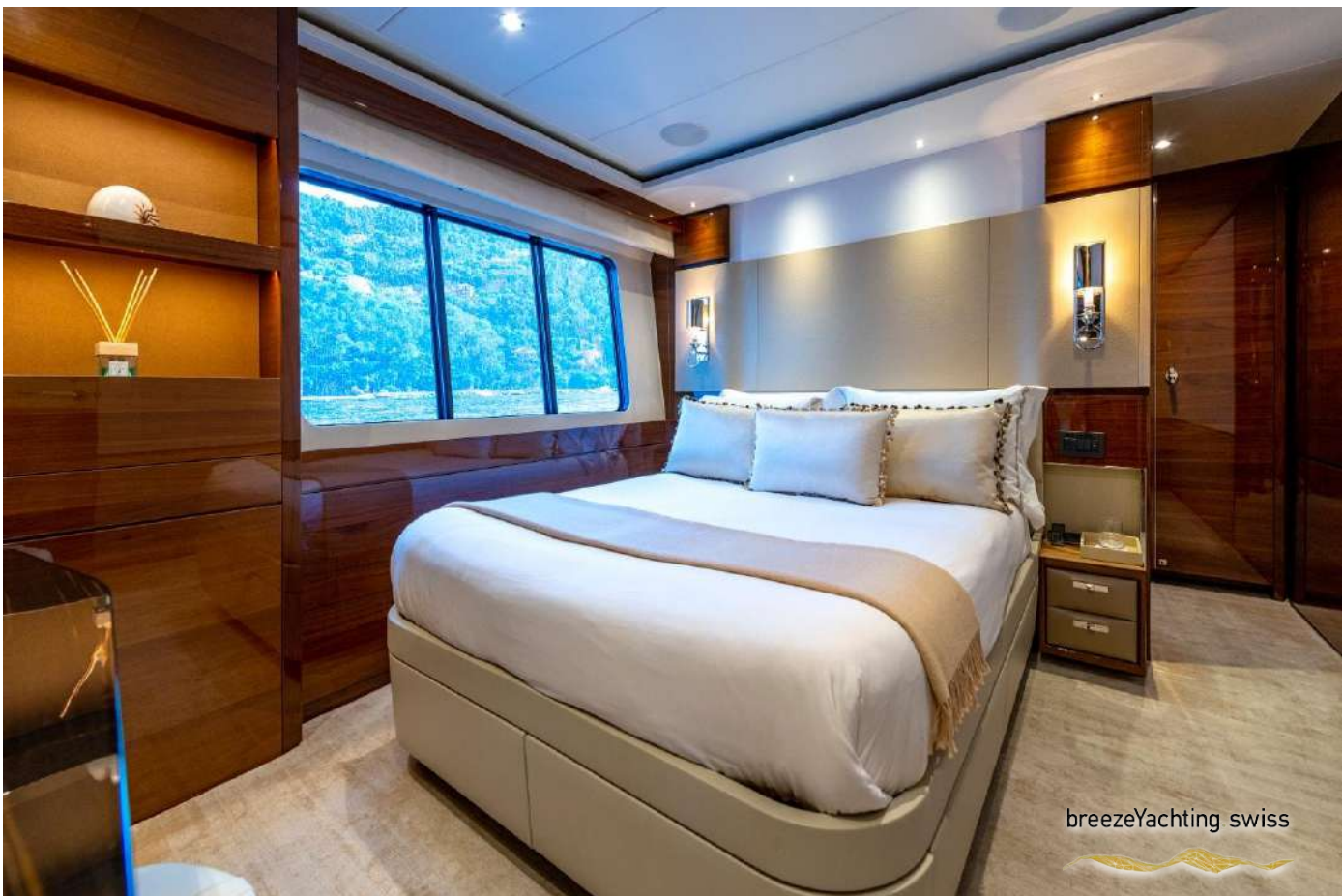


















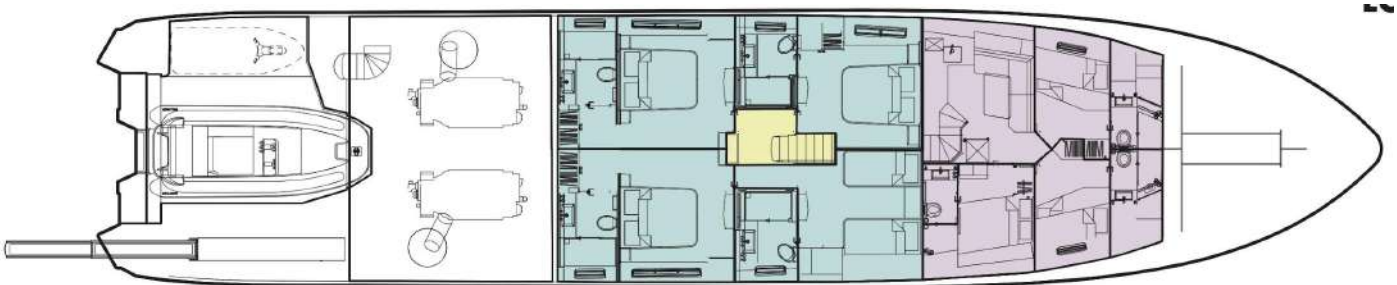
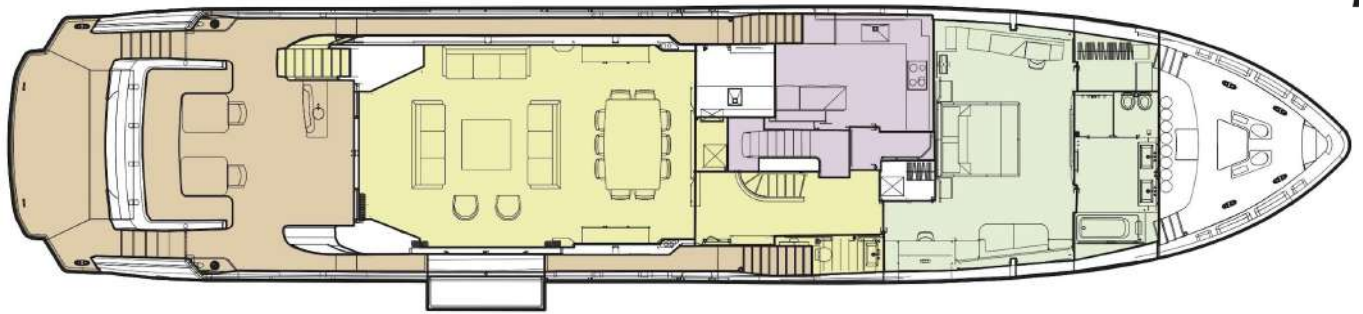
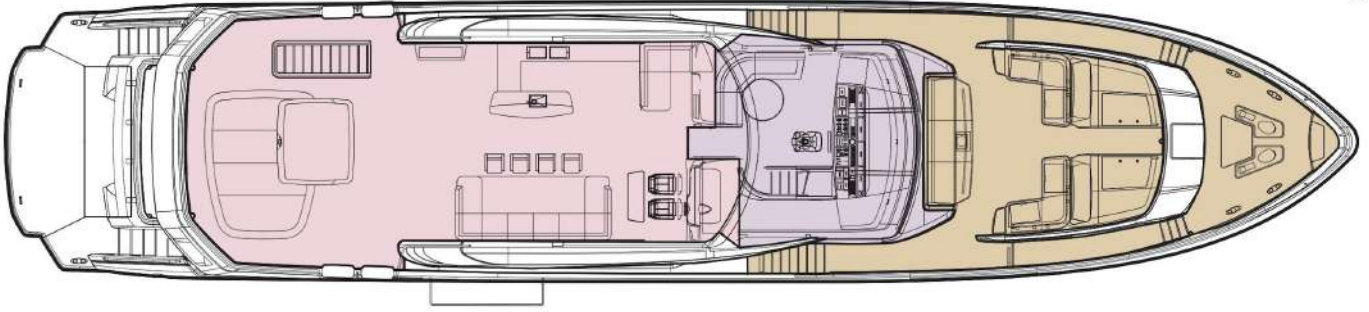
# SPECIFICATIONS

<b>Builder:</b>	Princess
<b>Model:</b>	35m
<b>Year:</b>	2017
<b>Exterior Styling &amp; Concept:</b>	Bernard Olesinski Interior
<b>Designer:</b>	Zuretti Interior Design
<b>Flag:</b>	RIF
<b>Length overall:</b>	35.2m
<b>Beam:</b>	7.3m
<b>Draft:</b>	2.11m
<b>Cabins:</b>	5
<b>Cabins Configuration:</b>	2 MASTER + 3 DOUBLE + 2 TWIN
<b>Guests Sleeps:</b>	10
<b>Engine:</b>	2 x MTU 2000 M94
<b>Engine power:</b>	1948 HP
<b>Cruising speed:</b>	16 kn
<b>Top speed:</b>	24 kn
<b>Fuel Consumption:</b>	540 L/h & cruising speed
<b>Tender:</b>	5.45m
<b>Water Toys:</b>	2 x paddle Boards 2 x Seabobs 1 x Waterski 1 x Wake surf 1 x Efoil 1 x Towable Snorkelling Equipment





# LAYOUTS





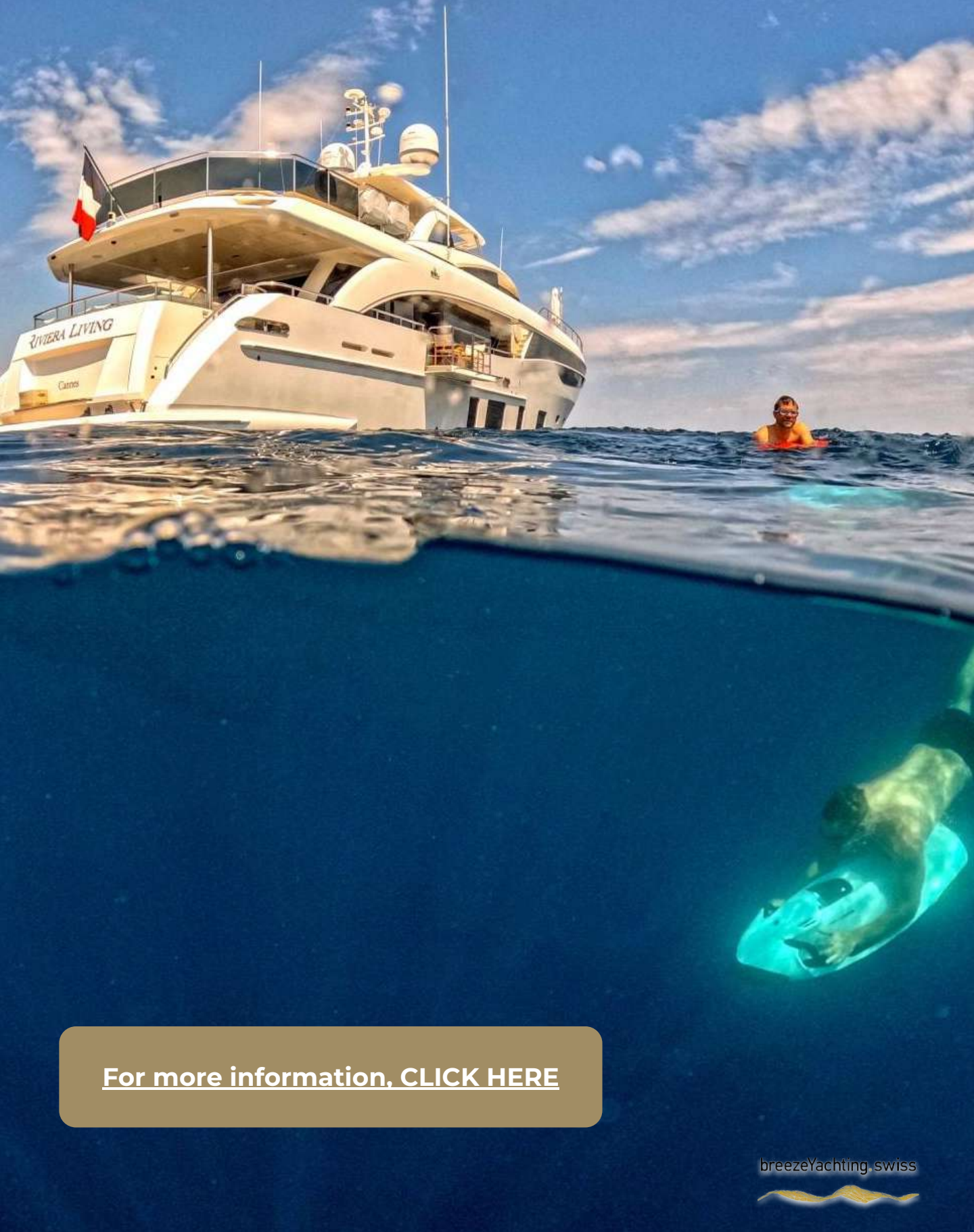


## TENDERS & WATER TOYS

- Tender 5,45m
- 2 x paddle Boards
- 2 x Seabobs
- 1 x Waterski
- 1 x Wake surf
- 1 x Efoil
- 1 x Towable
- Snorkelling Equipment







[For more information, CLICK HERE](#)

breezeYachting.swiss







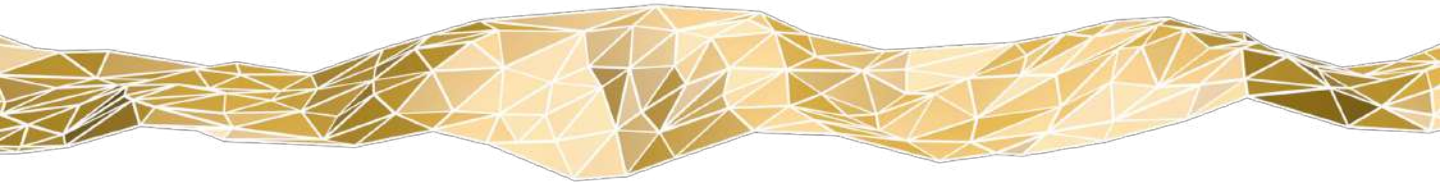
**ANASTASIA PAK**  
Charter Advisor  
m. +33 7 67 19 54 87



[apg@breezeyachting.swiss](mailto:apg@breezeyachting.swiss)

# breezeYachting.swiss

WE SPEAK YACHTING. LET'S TALK.



Switzerland ● Malta ● Spain ● Monaco

[www.breezeyachting.swiss](http://www.breezeyachting.swiss)

#### DISCLAIMER

The company offers the details of this vessel in good faith but cannot guarantee or warrant the accuracy of this information nor warrant the condition of the vessel. A buyer should instruct his agents, or his surveyors, to investigate such details as the buyer desires validated. This vessel is offered subject to prior sale, price change or withdrawal without notice.