

breezeYachting.swiss

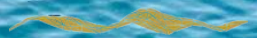


Bluegame BG42 'VAYA'

EUR 890'000 excl. VAT | 13m | 2022

KEY POINTS

- Seakeeper gyro stabilizer
- Lipo batteries to run silent for 18h (incl. icemaker, gyro and fridges)
- All extras, such as flir nightvision, Volvo Penta DPS, watermaker and more
- Top condition from Swiss owner, as new
- Engine upgrade, bigger IPS 650 than standard 600









breezeYachting swiss













SPECIFICATIONS

Builder:	Bluegame
Model:	BG42
Model Year:	2022
Flag:	Swiss
Hull/Superstructure:	GRP / GRP
Hull shape	Planing
Design	Modern
Length overall:	12.98 m
Beam:	4.37 m
Draft:	1.05 m
Cabins:	1
Berths:	2
Heads:	1
Max Guests:	14
Engines:	2 x Volvo Penta IPS 650 D6
Engine power:	2 x 480 hp (upgraded engine option)
Engine hours:	330 h
Fuel Type:	Diesel
Drive Type:	Pod Drive
Lipo Battery::	330 Ampere hours
Max Speed:	35 kn
Cruising Speed:	30 kn
Fuel Tank:	1400 l
Water Tank:	360 l



EQUIPMENT

Functionality

- Volvo IPS 650 (diff. from STD IPS600)
- Canvas strataglass closing all cockpit (full version)
- Ladder frame kit for Hard top (ladder-handrails)
- Sun pad for Hard Top
- Hydraulic lifting platform (400 Kg net lifting capacity)
- Retractable gangway with pantograph steps
- Bow winch with fresh water outlet
- Stern winch (n.2 units)
- Gyroscope Seakeeper 3
- Additional battery pack for stabilizer
- Interceptor system (diff. from STD flaps)
- Searchlight on hard top with remote control
- Underwater lights (n.2)

Decoration

- Teak cockpit, walkaround and platform

Electronics

- N.2 multifunctional Garmin display 16" (diff. From 9" STD) integrated in hard top Radar Radome 24"
- Tv in dinette
- Auto Pilot Volvo
- Flir night vision camera M232
- Engine room infrared monitoring system
- AIS system Rx/Tx
- Assisted Docking Volvo Penta including DPS function



EQUIPMENT

Service

- Interior furniture equipped with n.2 burners, sink, microwave and trash bin
- A/C 32.000 Btu inverter in lower deck and consolle including upgrade generator 9 kW
- Extra fridge (lower deck)
- Icemaker 6.5 Kg/h
- Bow area awning system with carbon poles
- Cockpit awning system with carbon poles
- Safe
- Feet support under console

Service

- Seajet Antifouling on IPS
- Set of Fender covers and rope covers

Special-Options

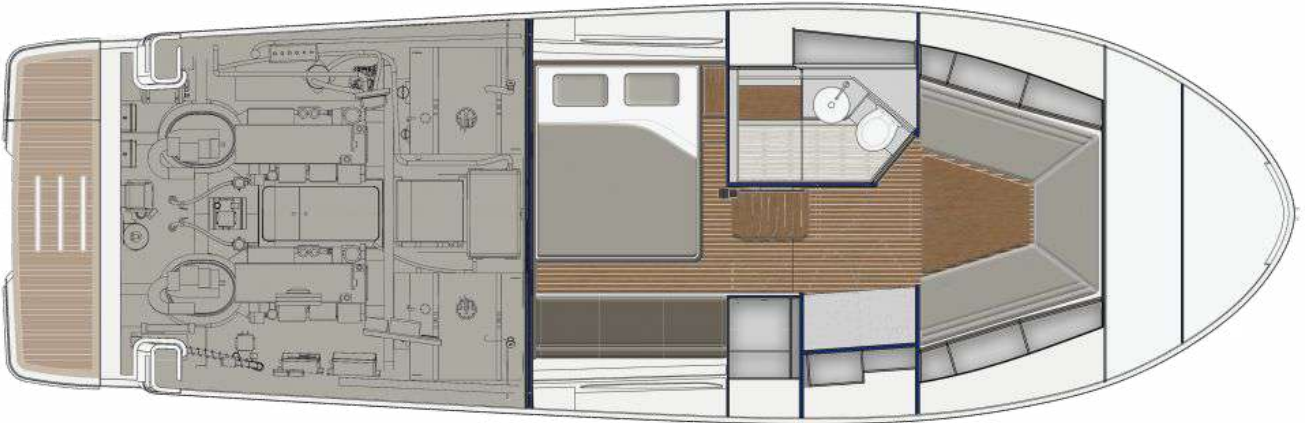
- Reduction add. Battery
- Teppanyaki-Induction Hub and plate additional
- Proportional 80kg Bowthruster
- Watermaker
- Radar Reflector in black
- Sonar
- Apple predisposition

Individual Equipment

- Tender AB Inflatables 8AL, inkl. Mount & Engine Torqeedo Travel 1103C
- Bicycle Box in Engine Room
- Live raft SeaSafe 6 Pro IIght in Bag
- Grab-Bag Upgrade for 6 PAX, 24hrs
- Live vests 180/275NM for 6 PAX



LAYOUTS





CORNELIUS KISTLER

Founder & CEO

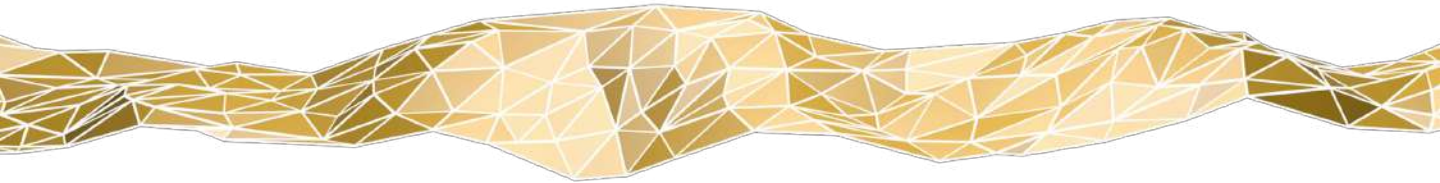
 WHATSAPP ME

m. +41 79 702 7000

ck@breezeyachting.swiss

breezeYachting.swiss

WE SPEAK YACHTING. LET'S TALK.



Switzerland ● Malta ● Spain ● Monaco

www.breezeyachting.swiss

DISCLAIMER

The company offers the details of this vessel in good faith but cannot guarantee or warrant the accuracy of this information nor warrant the condition of the vessel. A buyer should instruct his agents, or his surveyors, to investigate such details as the buyer desires validated.

This vessel is offered subject to prior sale, price change or withdrawal without notice.



[For more information, CLICK HERE](#)

breezeYachting.swiss

